

SLEEKFENCE™ ALUMINUM FENCE SYSTEM

76 1/2"



PANEL HEIGHT OPTIONS

- 46"
- 69"
- 92"
- CUSTOM

NOM. HEIGHT: 72"  
PANEL HEIGHT: 69"

GRADE LEVEL

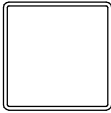
36"  
MIN. FOOTING DEPTH

3/4"  
GAP

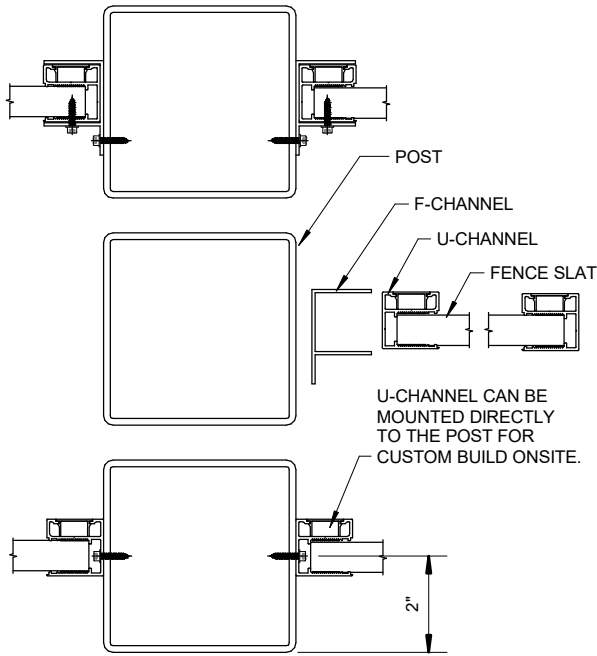
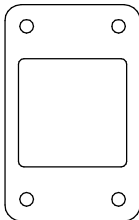
POST CAP

- POST HEIGHTS:
- 7'
  - 9'
  - 12'

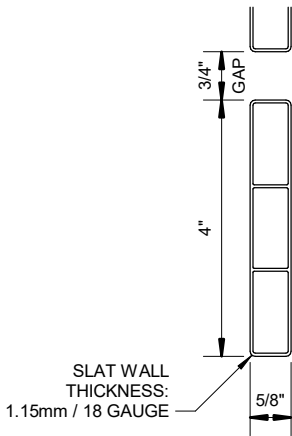
WALL THICKNESS 0.138"



4"x4"x 0.138" (WALL THICKNESS) POST WITH OPTIONAL 5"x8" BASEPLATE

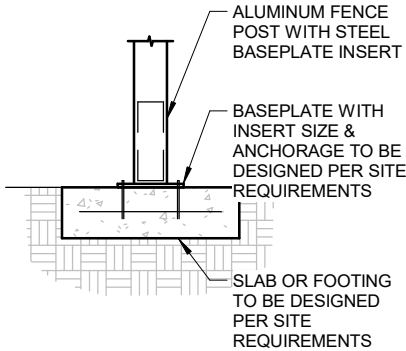


TOP VIEW



HORIZONTAL SLAT VIEW

OPTIONAL  
CONCRETE MOUNT POST



ADJUSTABLE MOUNTING CHANNEL  
FOR PANEL ATTACHMENT AT ANY ANGLE



STYLE: SCREEN FENCE

ACTUAL PANEL DIMENSIONS:  
72" WIDE BY 69" HIGH

FASTENERS: STAINLESS STEEL

SCALE: NTS

ALUMINUM: 6063-T6  
HAS A HIGH RESISTANCE TO FRACTURE  
AND FATIGUE AND IS VERY STRONG

POWDER COATING: QUALICOAT  
LICENSED APPLICATOR



HIGH QUALITY PRE-ASSEMBLED PANEL FOR  
RESIDENTIAL, COMMERCIAL AND INDUSTRIAL USE

RATED FOR HURRICANE ZONES (HVHZ)  
WIND RATINGS AND RESOURCES:  
<https://www.sleekfence.com/learning-hub>

FIRE RATING: ASTM E84 Class A, NON-COMBUSTIBLE

 SLEEKFENCE™

[www.sleekfence.com](http://www.sleekfence.com)

1 855-875-0855

[support@sleekfence.com](mailto:support@sleekfence.com)