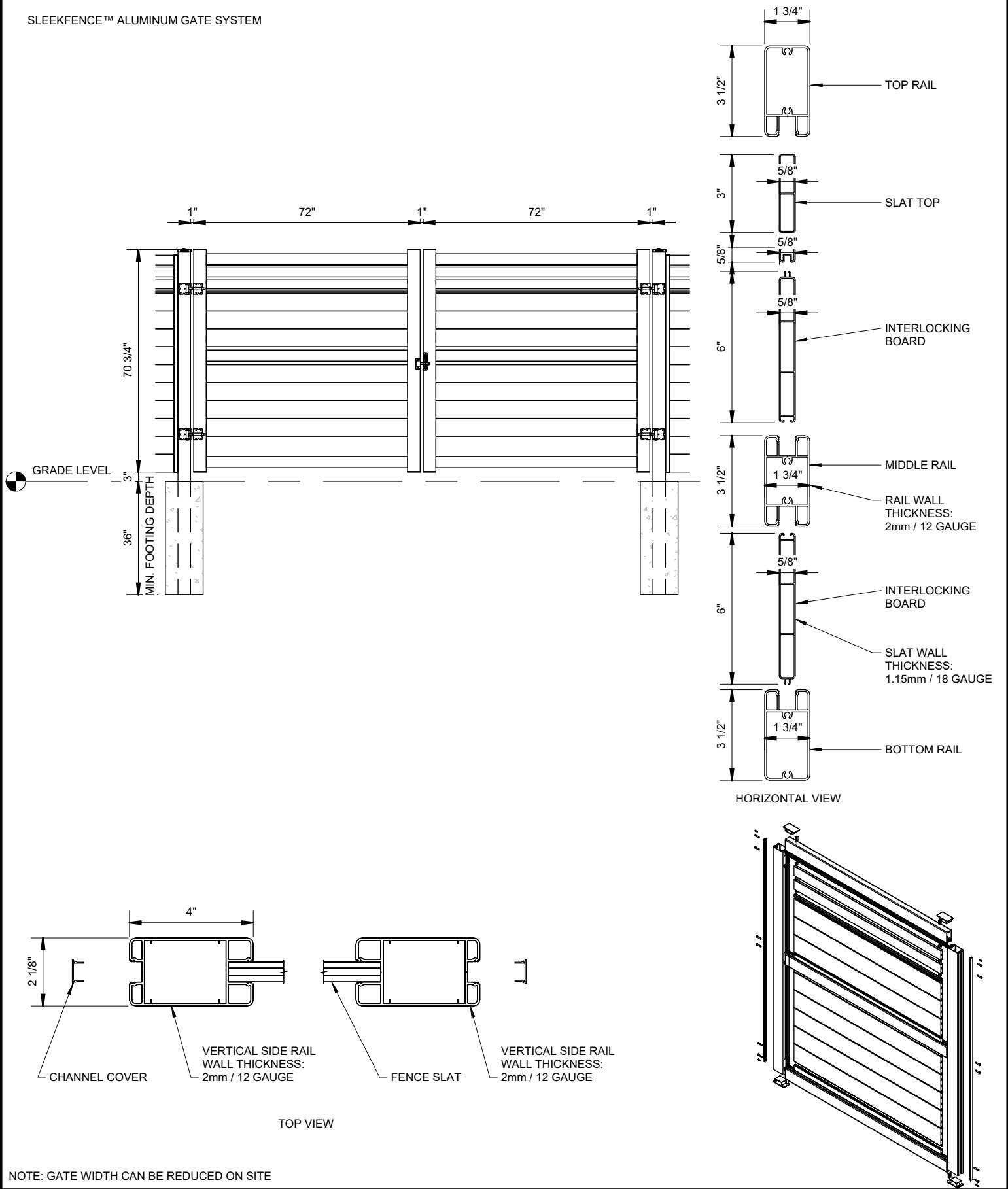




SLEEKFENCE™ ALUMINUM GATE SYSTEM



NOTE: GATE WIDTH CAN BE REDUCED ON SITE

STYLE: SLAT TOP DOUBLE GATE	ALUMINUM: 6063-T6 HAS A HIGH RESISTANCE TO FRACTURE AND FATIGUE AND IS VERY STRONG	HIGH QUALITY PRE-ASSEMBLED PANEL FOR RESIDENTIAL, COMMERCIAL AND INDUSTRIAL USE	 www.sleekfence.com 1 855-875-0855 support@sleekfence.com
ACTUAL GATE DIMENSIONS: 72" WIDE BY 70.75" HIGH	POWDER COATING: QUALICOAT LICENSED APPLICATOR	RATED FOR HURRICANE ZONES (HVHZ) WIND RATINGS AND RESOURCES: https://www.sleekfence.com/learning-hub	
FASTENERS: STAINLESS STEEL		FIRE RATING: ASTM E84 Class A, NON-COMBUSTIBLE	
SCALE: NTS			